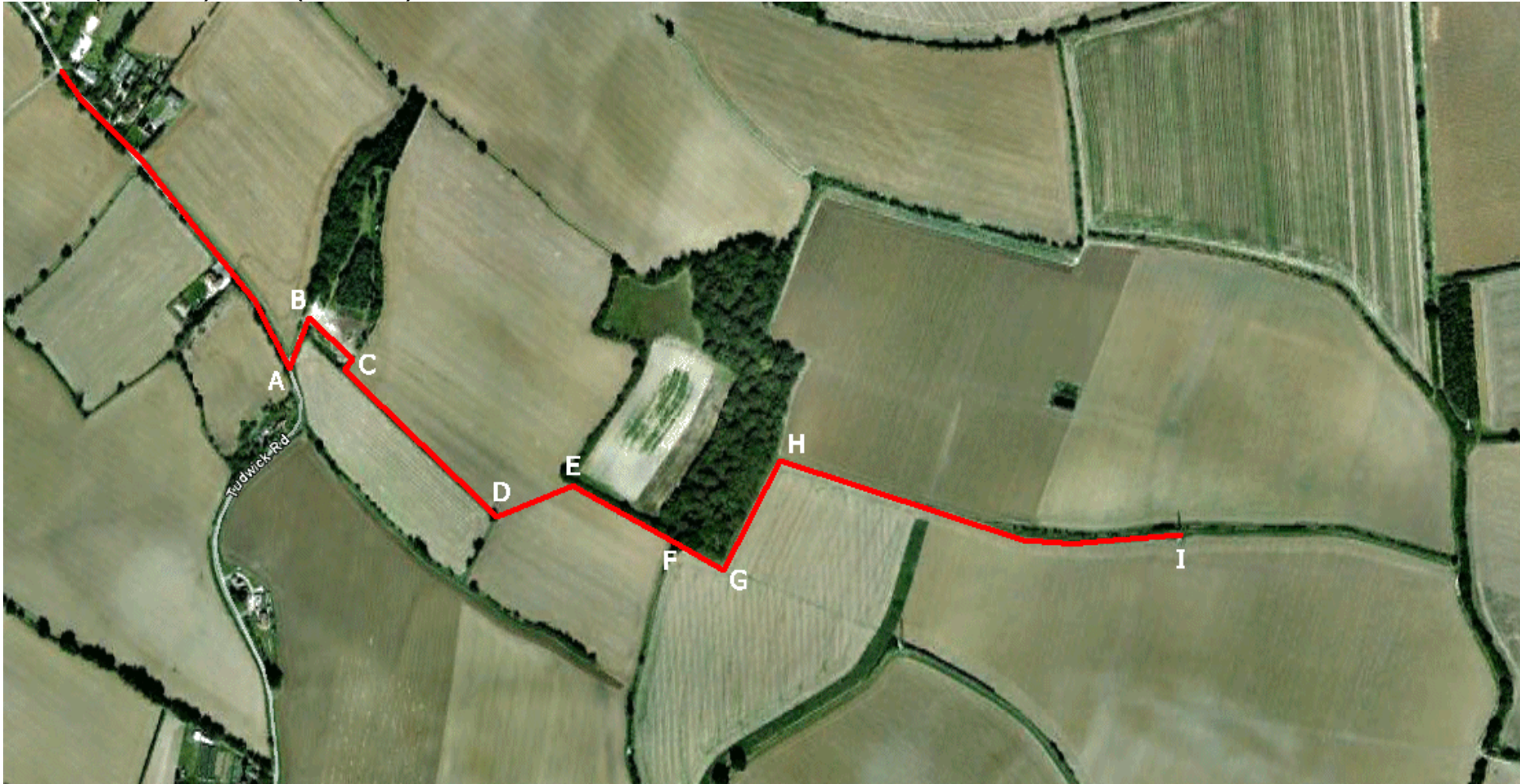


Walk 2A (1.25 miles) and 2B (2.00 miles)



Turn right (Point B) and head for the field. After 60 yards turn right and then left (Point C) to follow the field edge.

After 250 yards you will reach a planked bridge (Point D). Cross the bridge and turn left to follow the marked path through the field.

At the edge of the field (Point E) turn right and follow the hedgerow until you come to a bridge with metal supports (Point F).

If you've chosen **Walk 2A**, note the code word at the bridge and retrace your route back to Longfield.

Straight on and then turn left (Point G) to follow the edge of the wood. After 130 yards turn right (Point H) onto the grassy path.

Follow this path for about a quarter of a mile until you go under the electricity transmission line (Point I).

End of Walk 2B. Note the code word on the pylon and retrace your route back to Longfield.