

Handout 0 at Signing On

Cautions

99 / 190 687 – Beware of 90° right over crest.

99 / 200 673¾ to 209 668½ - Beware of potholes.

99 / 208 641 – Big Yump.

104 / 132 596 – Severe not as map fresh air hairpin bend.

104 / 133½ 596½ - Narrow bridge.

Main Time Controls & Rejoin Points

All instructions on this handout are CRO.

MTC1 - is at the front of the clubhouse in the yard in front of Great Northern Wine Co and the King William IV pub (99 / 310½ 713 ½)

NTC8 - 99 / 184 609 (approach from the North East)

TTC11 – 99 / 073 631½

MTC2 – 104 / 144 558 – approach from A59 via 135 551½. Please keep speeds down on the A59 as the Police will be patrolling it.

You are expected to make up lateness up to a maximum of **20 minutes** at MTC2.

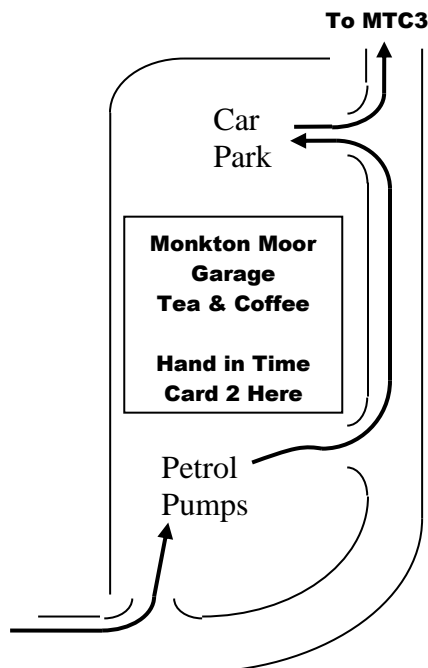
The mid point noise test is at MTC2.

NTC19 – 104 / 218 483¾ (approach from the South West)

STC23 to MTC3

From STC23 join the A59 (SGW) and go east to the roundabout at 277¼ 569¾, depart NNE on the B6161 (please be quiet in Killinghall). At 286¼ 587 join the A61 (SGW) and depart N to petrol at 99 / 308 651 (see diagram).

Please hand in time card 2 at the petrol halt.



From Petrol depart north on the A61 to join the B6265 at 320 706½ and then go via the roundabout at 313¼ 710½ and the traffic lights at 311 711½ to the mini roundabout at 301½ 710½ where you should turn right. At 306 712½ turn left at the mini roundabout and follow the road to 293¼ 718½ depart West North West on the private road to Clothholme Farm. MTC3 is on the white road before you reach the farm. Please be quiet in Ripon.

You are expected to make up as much lateness as possible at MTC3.

TTC 28 – 99 / 230½ 774½ (depart North to control)

NTC32 – 99 / 226 821½ (depart North to control)

STC33 to MTC4

From STC33 go via the mini roundabout at 99 / 269 788½ and join the A6108 towards Ripon. At 312½ 718½ turn right into the city centre and follow the one way system onto the Market Place. At 312 ½ 712 ¼ turn right and follow the one way system to 310 ½ 713 where you should turn right onto Blossomgate. MTC4 is outside the Club house. Please park in the car park at the rear of the Club house before going inside for breakfast.

Please be quiet in West Tanfield, North Stainley and Ripon

EMERGENCY PHONE NUMBERS

In the event of an emergency call the Clubhouse on **01765 602746**, Clerk of the Course on 07929 721132 or Chief Marshal on 07850 297274

Handout 1 at MTC1

MTC1 to NTC2 (CRO)

From MTC1 turn left onto Blossomgate and follow the one way system to the right into Park Street. Pass the Swimming Baths on your left.

At 306 712½ keep left at the mini roundabout and at 301½ 710½ turn right at the mini roundabout, joining the B6265 and following signs for Pateley Bridge. NTC2 is on the B6265 at 274 699¾. Please be quiet between MTC1 and NTC2.

Second Time Card Pre Plot

You do not need to plot this until you reach the transport section between STC14 and MTC2, but do not forget to do it!

MTC2 to NTC19

From MTC2 at 144 558 go via the following spot heights ONLY to reach IRTCS16, RTC17 & STC18 (CRO)

(PC) 261 (SGW) (PC) 223 (Use GT'M' at next junction) 284 (SGW at next junction) 273
PC 281 277 255 235 PC 211 (SGW) 199 233 278 265 206.

At 165¼ 579½ use GT 'H' and at 175 507½ use GT 'Q'.

IRTCS16 is between the 2nd & 3rd junctions

RTC17 is between the 13th & 14th junctions

STC18 is between the 16th & 17th junctions

Please be quiet in grid squares 16 58 (northern half), 16 55 & 17 55 (you have plenty of time in this section)

STC18 to NTC19

From STC18 go via 200½ 459¾ & 216¼ 475 to NTC19 at 218 483¾ Depart NE (CRO)

Quiet in Otley and Farnley. Care at 200½ 459¾ - not as map left turn into 'B' road (you do not come to a give way junction as shown on the map)

Handout 2 at NTC2

NTC2 to NTC4

From NTC2 at 274 699¾ avoid the 50m radius black spots and go via the grid lines and spot heights in the order given to reach STC3 (CRO).

50m radius black spots - 237 703½ & 260 694.

27 (Use GT'C' at next junction) 143, 26, 70(Use GT'D' at next junction) 25, 24 (Use GT'K' at next junction) 71, SGW, PC, SGW, 71. STC3 is before the next junction.

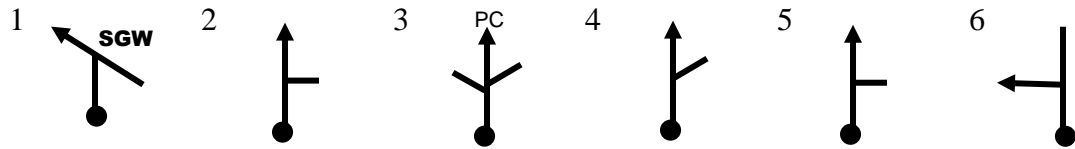
From STC3 go to NTC4 via 233 702, 226¾ 700¼ & 215¼ 700½ (depart West North West to control) (CRO).

Quiet High Grantley.

Handout 3 at NTC4

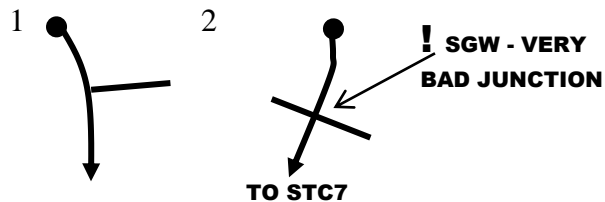
NTC4 to NTC8

From NTC4 use the following tulips in order to reach IRTCS5 (AR)



From IRTCS5 go via 209 668½ (SGW) and 212½ 670 depart South South East to RTC6 (AR).

From RTC6 use the following tulips to reach STC7 (CRO).



From STC7 go via 201½ 624¼ (SGW) and 192 609½ to NTC8 at 184 609 (CRO).

Quiet Summerbridge, Dacre Banks & Dacre.

Handout 4 at NTC8

NTC8 to TTC11

From NTC8 use the following Grid Lines, Spot Heights & Map Features to reach STC10 (CRO)

18 61 17 251 62 326 (SGW & Use GT'J') 338 16 63 > >> 64 >>> 129 < 15 (PC) 64
14 64 13

Caution! - Very tight 90° left / right at 152½ 643½ - Handle with care.....

STCS9 is between the 4th & 5th junctions

STC10 is between the 6th & 7th junctions

From STC10 join the B6265 (SGW) and go via 112½ 642 to TTC11 at 073 631½ (CRO).

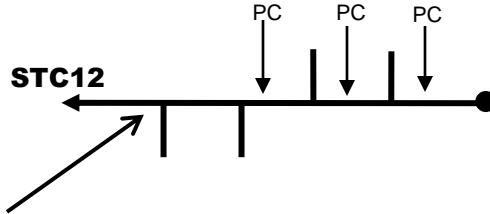
VERY QUIET IN GREENHOW (Very Angry Resident – Please do not disturb).

There is a lay by at 086 635½ if you are early and need somewhere safe to park

Handout 5 at TTC11

TTC11 to NTC13

From TTC11 use the following herringbone to reach STC12 (AR)



Look carefully and refer to Maps 98 & 104 if necessary.

From STC12 go via 032¼ 611½ (SGW, Depart South West). NTC13 is on the B6160 before the next junction (CRO).

Very Quiet in Appletreewick and Burnsall.

Very angry resident – Driving Standards Observers will be monitoring you.

Handout 6 at NTC13

NTC13 to MTC2

From NTC13 use the following spot heights and grid references to reach STC14 (AR)

217, 189, (PC), 179, (PC), 051 573³/₄, (PC), 051¹/₂ 573³/₄ (SGW), 050¹/₂ 572³/₄ (SGW),
176, 311, 285

From STC14 proceed via the following to MTC2 (CRO)

012 539 (SGW) **VERY QUIET IN EASTBY & EMBSAY**

014 537

031¹/₂ 536¹/₄

031³/₄ 534¹/₄ (SGW & join A59)

070¹/₂ 527¹/₂

135¹/₂ 551¹/₂ Turn onto the yellow road.

MTC2 is on the yellow road before the next coloured junction and is the mid point noise test. Please keep speeds down on the A59 as the Police will be patrolling it.

Hand in time card 1 at STC14.

Do not forget to do the Pre Plot given on Handout 1

Handout 7 at NTC19

NTC19 to NTC22

From NTC19 avoid the following 50m radius black spots to reach IRTCS 20 and RTC21 (CRO)

228½ 488, 233 482, 211½ 507½, 247½ 498¾, 257 510, 267 529

There is a PC at the 3rd junction and there are PC's after the 6th, 7th, 8th & 9th junctions respectively.

SGW at 3rd, 4th & 5th junctions

IRTCS20 is at the 5th junction

QUIET IN GRID SQUARE 26 52 (you have plenty of time in this section)

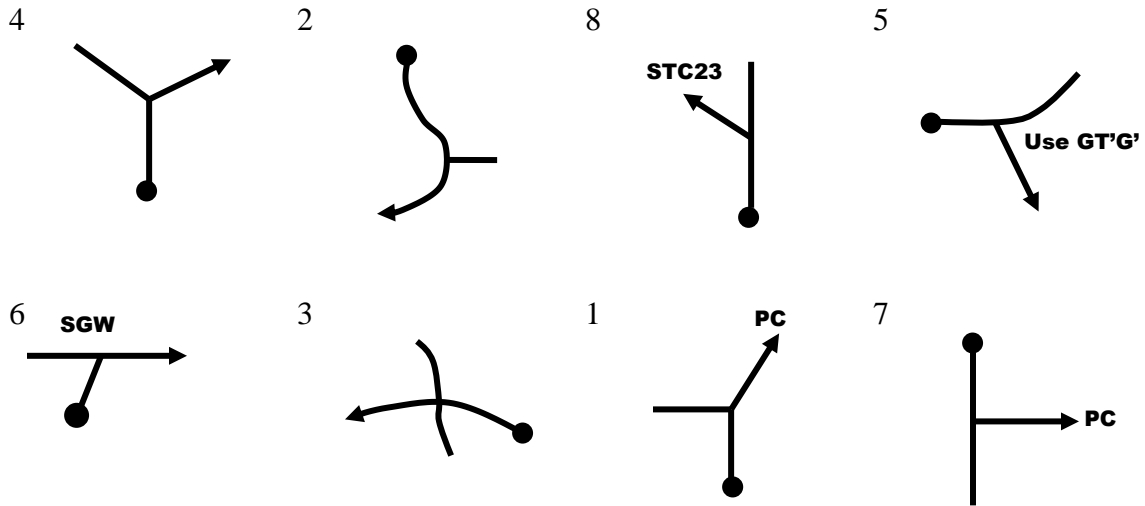
RTC21 is in grid square 23 52

From RTC21 go via 206¾ 531 (SGW) and 206½ 534 Depart W to NTC22 (CRO)

Handout 8 at NTC22

NTC22 to STC23

From NTC22 use the following tulips to reach STC23 (CRO)



From STC23 join the A59 at 219½ 561½ (SGW, depart East) and go to Petrol at 308 651 and then to MTC3 using the instructions given at signing on. (MTC3 is west of 293¼ 718½) (CRO).

Quiet in Killinghall & Ripon.

Handout 9 at MTC3

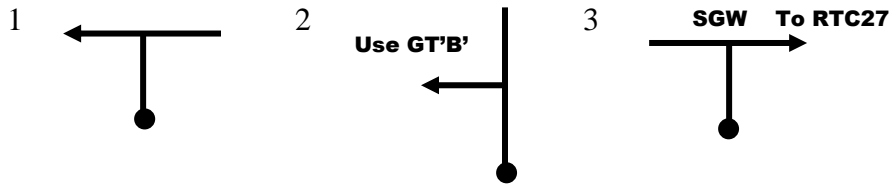
MTC3 to TTC28

From MTC3 use Map 1 to reach the main road at 288¾ 729 (SGW and turn left). Then cross the following grid lines to reach STC25 at 276 753½ (AR)

73 28 74 (PC) 75

From STC25 use Map 2 to reach IRTCS26

Rejoin the public road at 272 764 depart North North West (SGW) and use the following tulips to reach RTC27 (CRO)



From RTC27 go via 259 748 (SGW), 243½ 757½, 229½ 765½ & 230½ 774½ Depart North to TTC28 (CRO).

Quiet Grewelthorpe

Map 1

Map 2

Handout 10 at TTC28

TTC28 to NTC30

From TTC28 go via the following grid references to STC29 (CRO)

224½ 785	Use GT 'A'
213¼ 795	(SGW)
203 782½	Depart West to STC29

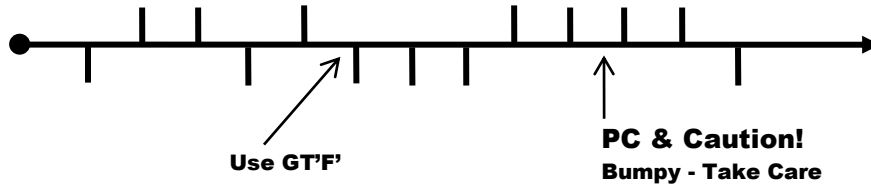
From STC29 go via 191 781¼ and 186 786 and depart North North West to NTC30.

VERY QUIET IN ILTON (Very Angry Resident – Please do not disturb).

Handout 11 at NTC30

NTC30 to NTC32

From NTC30 use the following herringbone to reach STC31 (AR)



STC31 is on a Yellow road north of grid line 81

From STC31 go via 222 809¼ (SGW) and 226½ 812½ depart North to NTC32 (CRO)

Quiet Masham

Handout 12 at NTC32

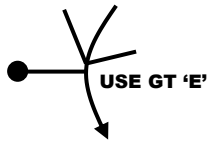
NTC32 to STC33

From NTC32 use the following tulips to reach STC33 (CRO)

1



2



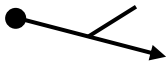
3



4



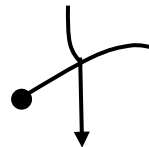
5



6



7



From STC33 go via 269 788½ (SGW) to MTC4 at 310 714 using the instructions given at signing on. (CRO)

Quiet Tanfield, North Stainley & Ripon

Route Amendment

Signed

Adam Roper Clerk of the Course

Car	Signature	Car	Signature
1		31	
2		32	
3		33	
4		34	
5		35	
6		36	
7		37	
8		38	
9		39	
10		40	
11		41	
12		42	
13		43	
14		44	
15		45	
16		46	
17		47	
18		48	
19		49	
20		50	
21		51	
22		52	
23		53	
24		54	
25		55	
26		56	
27		57	
28		58	
29		59	
30		60	

GRASS TRIANGLES

A	B	C
D	E	F
G	H	J
K	L	M
N	P	Q

ORGANISERS PHONE NUMBERS

ADAM ROPER	CLERK OF THE COURSE	07929 721132
BERNIE WATKINS	ASSISTANT CLERK OF THE COURSE	
DOUG SMITH	CHIEF MARSHAL	07850 297274
STEVE TAYLOR	CHIEF MARSHAL	
COLIN / SARAH	TIMEKEEPERS	
LEE HUDSON	SECRETARY	
DAVE HOWEL	FLYING MARSHAL	
GORDON LISA	CLOSING CAR (HUMPHREY THE HORNET)	07929 590274 07929 590704
	RECOVERY TEAM	
LYNSEY WALSH	ENTRIES SECRETARY	
	CLUBHOUSE	01765 602746

HANDOUT CHECK SHEET

(THE CONTROLS WHERE YOU SHOULD GIVE OUT HANDOUTS AT)

SIGNING ON	
MTC1	
NTC2	
STC3	
NTC4	
IRTCS5	
RTC6	
STC7	
NTC8	
STCS9	
STC10	
TTC11	
STC12	
NTC13	
STC14	
MTC2	
IRTCS16	
RTC17	
STC18	
NTC19	
IRTCS20	
RTC21	
NTC22	
STC23	
MTC3	
STC25	
IRTCS26	
RTC27	
TTC28	
STC29	
NTC30	
STC31	
NTC32	
STC33	
MTC4	